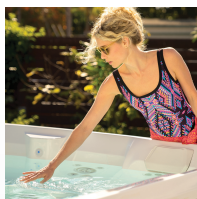


# HIGHLIFE® COLLECTION

# ARIA®



FreshWater® IQ  
System Ready



100% Filtration  
SilentFlo Circulation



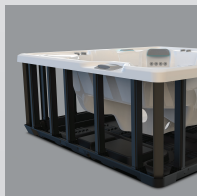
Moto-Massage® DX



Super Energy  
Efficient



Color LCD  
Touchscreen



Polymer Substructure  
& Base Pan

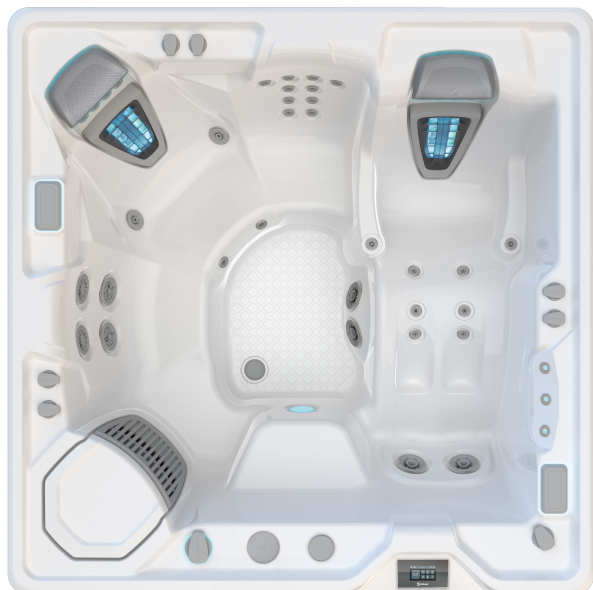


Shown with Alpine White Shell  
and Linen Cabinet

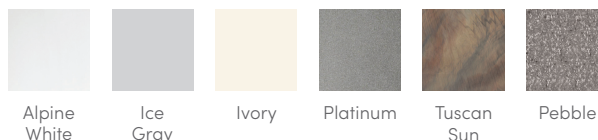
<b>People</b>	<b>Seating</b>	<b>Jets</b>	<b>Voltage</b>
5 Seats	Lounge	42 Jets	230 V

**Size**  
7'3" x 7'3" x 36" | 221 cm x 221 cm x 91 cm

**Water Care**  
FreshWater® Salt System Included



## SHELL COLORS



## CABINET COLORS



## COVER COLORS



### CABINET AND SHELL COLOR OPTIONS\*

Cabinet Colors	Java	Charcoal	Blackwood	Linen	Brushed Nickel
<b>Shell Colors</b>	Alpine White Ice Gray Ivory Tuscan Sun Pebble	Alpine White Ice Gray Platinum Tuscan Sun Pebble	Alpine White Ice Gray Platinum	Alpine White Ivory Tuscan Sun Pebble	Alpine White Ice Gray Platinum

### LEGENDARY MESSAGE

#### 42 Personalized-Control Jets

- 2 Moto-Massage® Seats
- Soothing Stream® Seat
- Precision® Jet Seat

### EASY WATER CARE

**Water Care System** FreshWater® Salt System Included  
Smart Monitoring System Optional

**Filtration System** 100% No-bypass Filtration  
Exclusive, High-flow Tri-X® Filters  
325 sq. ft. Filtration Area

### LEADING ENERGY EFFICIENCY

**Jet Pump 1** Wavemaster® 9000; One-speed, 2.5 HP Continuous Duty,  
5.2 HP Breakdown Torque

**Jet Pump 2** Wavemaster® 9200; Two-speed, 2.5 HP Continuous Duty,  
5.2 HP Breakdown Torque

**Circulation Pump** SilentFlo 5000® for quiet, continuous filtration

**Heater** Titanium No-Fault® 4,000 W / 230 V

**Insulation** Multiple Layers of Foam Insulation; Certified to California  
Energy Commission (CEC) and APSP 14 energy efficiency  
standards for portable spas

**Cover** WeatherPro™ 4" Tapered Custom-Fit with Hinge Seal

### SIZE

**Dimensions** 7'3" x 7'3" x 36" / 221 cm x 221 cm x 91 cm

### CAPACITY

**Seating Capacity** 5 seats with lounge

**Water Capacity** 365 gallons / 1,400 liters

**Weight** 680 lbs. / 310 kg dry; 4,600 lbs. / 2,110 kg filled\*\*

### ADDITIONAL FEATURES

**Smart Spa Technology** Hot Spring Spas App, Powered by the Connected Spa Kit

**Water Feature** BellaFontana® with 3 illuminated arcs of water

**Cover Lifters** CoverCradle®, CoverCradle II, Lift 'n Glide®, or UpRite®

**Steps** Steps are available to match cabinet colors

**Entertainment** Bluetooth® Wireless Sound System (Optional)

**Control System** IQ 2020® with Color LCD Touchscreen  
230 V / 50 amp, 60 Hz  
(Includes G.F.C.I. protected sub-panel)

**Lighting System** Luminescence® multi-color four-zone

**Cooling System** CoolZone™ (Optional)

\*No special orders or shell substitutions available. Actual colors and products may vary from print representation. See dealer to verify.  
\*\*Includes water and 5 adults weighing 175 lbs. each.