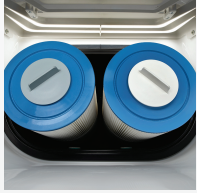


LIMELIGHT® COLLECTION



FreshWater® IQ
System Ready



Dual Action Filtration
SilentFlo Circulation



FiberCor®
High-Density Insulation



Color LCD Display

BEAM™



*Shown with Alpine White Shell
and Sable Cabinet*

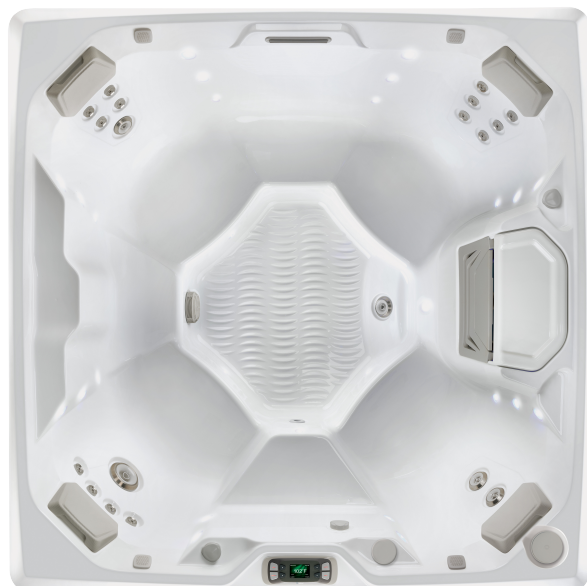
| | | | |
|---------------|----------------|-------------|----------------|
| People | Seating | Jets | Voltage |
| 4 Seats | Open | 19 Jets | 115 or 230 V |

Size
6'8" x 6'8" x 33" | 203 cm x 203 cm x 84 cm

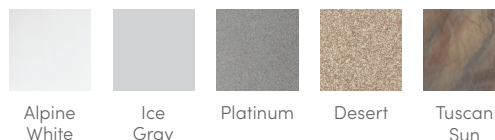
Water Care
FreshWater® Salt System Ready

LIMELIGHT® COLLECTION

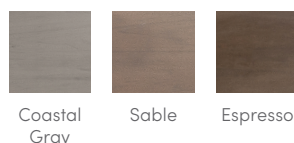
BEAM™



SHELL COLORS*

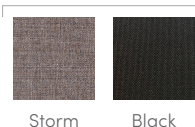


CABINET COLORS*



COVER COLORS

POLYESTER



LEGENDARY MESSAGE

19 Personalized-Control Jets

- 1 XL Dual Rotary jet
- 2 Standard Single Rotary jets
- 2 Standard Directional jets
- 14 Directional Precision® jets

EASY WATER CARE

| | |
|--------------------------|---|
| Water Care System | FreshWater® Salt System Ready Smart Monitoring System Optional |
| Filtration System | Dual action, 100 sq. ft., top loading |

LEADING ENERGY EFFICIENCY

| | |
|-------------------------|---|
| Jet Pump | Beam I Wavemaster® 7000; Two-speed, 1.65 HP Continuous Duty, 3.5 HP Breakdown Torque |
| | Beam II Wavemaster® 9000; Two-speed, 2.5 HP Continuous Duty, 5.2 HP Breakdown Torque |
| Circulation Pump | SilentFlo 5000® for quiet, continuous filtration |
| Heater | Beam I Titanium No-Fault® 1,500 W / 115 V or 6000w / 230v |
| | Beam II Titanium No-Fault® 6,000 W / 230 V |
| Insulation | FiberCor® Insulation; Certified to California Energy Commission (CEC) and APSP 14 energy efficiency standards for portable spas |
| Cover | WeatherPro™ 4" Tapered Custom-Fit with Hinge Seal |

SIZE

Dimensions 6'8" x 6'8" x 33" / 203 cm x 203 cm x 84 cm

CAPACITY

Seating Capacity 4 seats
Water Capacity 295 gallons / 1,115 liters
Weight 700 lbs. / 320 kg dry; 3,860 lbs. / 1,750 kg filled**

ADDITIONAL FEATURES

| | |
|-----------------------------|---|
| Smart Spa Technology | Hot Spring Spas App, Powered by the Connected Spa Kit |
| Water Feature | Vidro® backlit ribbon waterfall |
| Cover Lifters | CoverCradle®, CoverCradle II, Lift 'n Glide®, or UpRite® |
| Steps | Limelight Collection Step (Coastal Gray, Espresso, and Sable), Polymer Step (Ash) |
| Entertainment | Bluetooth® Wireless Sound System (Optional) |
| Control System | Beam I IQ 2020® with LCD control panel 115 V / 20 amp, 60 Hz (Includes G.F.C.I. protected power cord) or 230 V / 50 amp, 60 Hz |
| | Beam II IQ 2020® with LCD control panel 230 V / 50 amp, 60 Hz (Includes G.F.C.I. protected sub-panel) |
| Lighting System | Raio® multi-color interior points of light Exterior multi-color lighting with timer |
| Cooling System | CoolZone™ (Optional) |

*Actual colors and products may vary from print representation. See dealer to verify.
 **Includes water and 7 adults weighing 175 lbs. each.